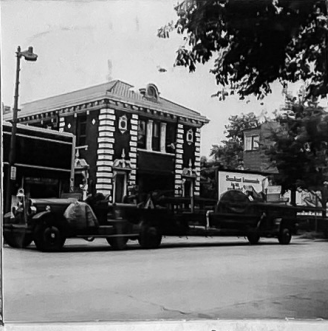




1926 MACK Tractor
1925 CFD Built 85 Ft
(Formerly TRK 49)



1919 MACK 85 Ft
(Formerly TRK 32)



1929 SEAGRAVE 85 Ft
(Formerly TRK 47)



1929 SEAGRAVE Tractor
1919 CFD Built "NO MAIN"
(Formerly TRK 53)



1938 WHITE Tractor
1915 CFD Built 85 Ft
(Formerly TRK 48)



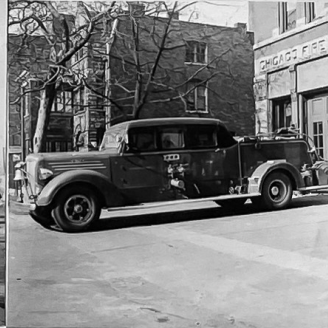
1929 SEAGRAVE 750 GPM
(Formerly ENG 7)



1931 LaFrance 1000 GPM
(Formerly ENG 81)



1938 MACK 1000 GPM
(Formerly ENG 103)



1938 MACK 1000 GPM
(Formerly ENG 22)



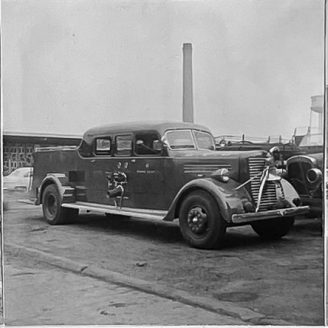
1938 MACK 1000 GPM
(Formerly ENG 98)



1937 PIRSCH 1000 GPM ¹⁹⁴⁰
(Formerly ENG 46)



1944 PIRSCH 1000 GPM ⁽¹⁹⁴⁰⁾
(formerly ENG ~~44~~)



1940 PIRSCH 1000 GPM ⁽¹⁹³⁸⁾
(Formerly ENG 9)



1946 PIRSCH 1000 GPM
(Formerly ENG 14)



1938 WHITE Tractor
1928 SEAGRAVE 85 Ft
(Formerly TRK 29)



1928 SEAGRAVE Tractor
1922 CFD Built 65 Ft
(Formerly TRK 54)



1938 WHITE Tractor
1915 SEAGRAVE 85 Ft
(Formerly TRK 43)



1918 MACK Tractor
1915 CFD Built "NO MAIN"
(Formerly TRK 38)



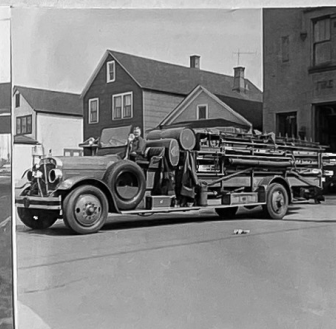
1929 SEAGRAVE CST
(Formerly TRK 56)



1929 SEAGRAVE CST
(Formerly TRK 55)



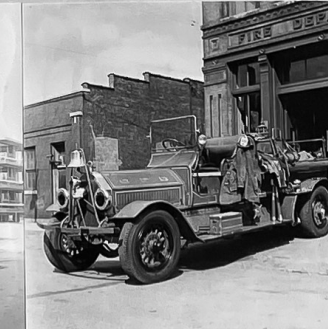
1929 WHITE Tractor
1926 CFD Built 85 Ft
(Formerly TRK 9)



1928 SEAGRAVE 750 GPM
(Formerly - ENG 97)



1918 AHRENS-FOX 750 GPM
(SPARE at 1044 Orleans)



1916 SEAGRAVE 750 GPM
(Formerly - ENG 36)



1929 SEAGRAVE CST
(Formerly - TRK 53)